

# Proposed CR 321 Landscape Improvements

- Canopy Tree  
(Live Oak, Red Oak, Cedar Elm, Pecan)
- Evergreen Tree  
(Leyland Cypress, Eastern Red Cedar, Burford Holly)

## THE TRAILS AT FOREST GROVE SUBDIVISION

42.93 Acre Tract Situated in the  
John W. Kirby Survey, Abstract No. 506  
Collin County, TX

Use R-1  
Number of Lots = 32  
Density=0.74 Units per Acre

### DEVELOPER

CONTACT: RYAN BETZ  
5707 WILLOW LANE  
DALLAS, TX 75230

### BETZ COMPANY

PHONE: (469) 682-2212  
FAX: (972) 503-2122

### VORDENBAUM ENGINEERING, INC.

CONTACT: KEVIN W. SPRAGGINS  
507-D E. HIGHWAY ST.  
FREDERICKSBURG, TX 78624

### ENGINEER/SURVEYOR

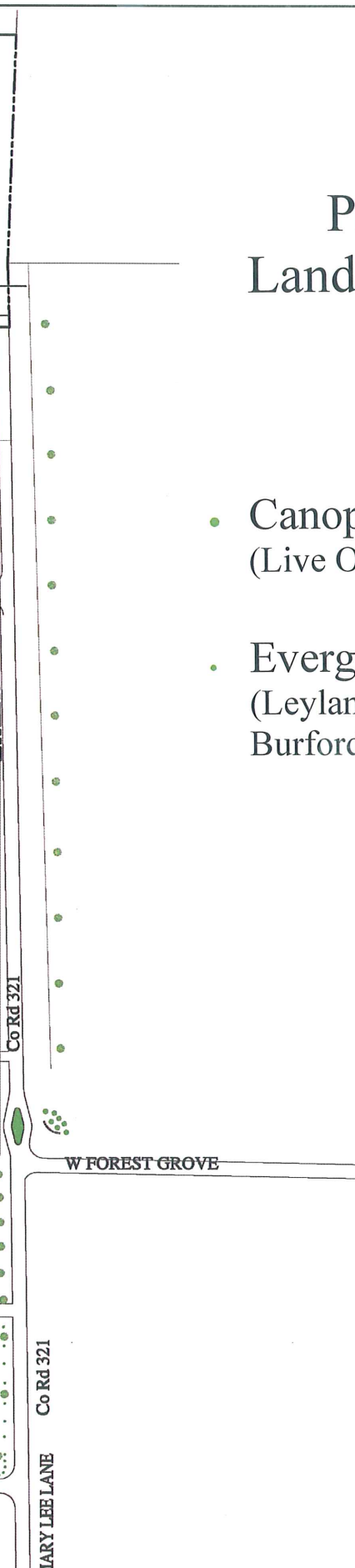
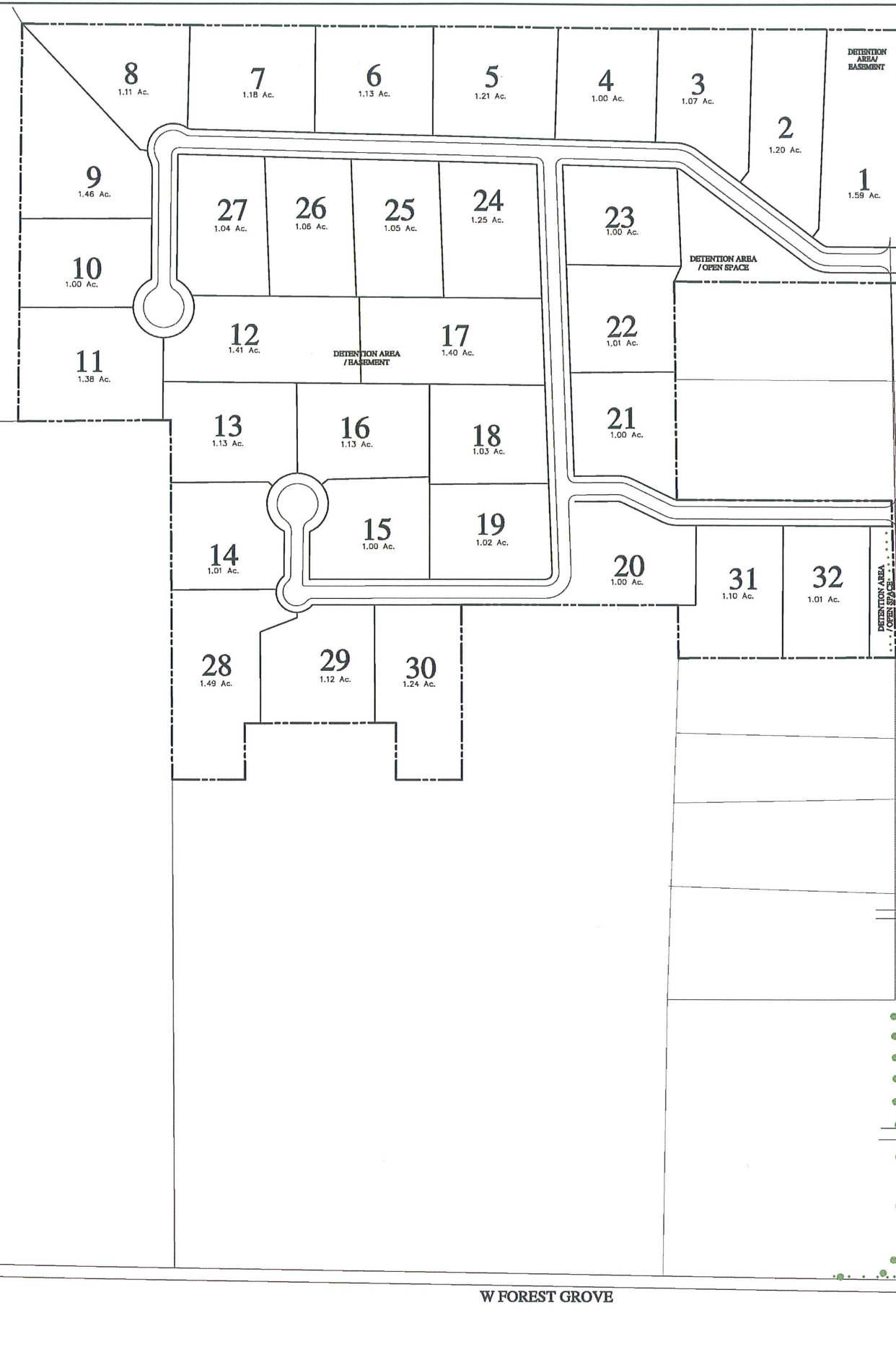
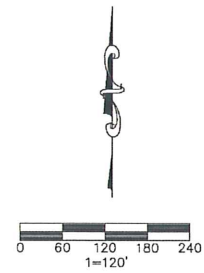
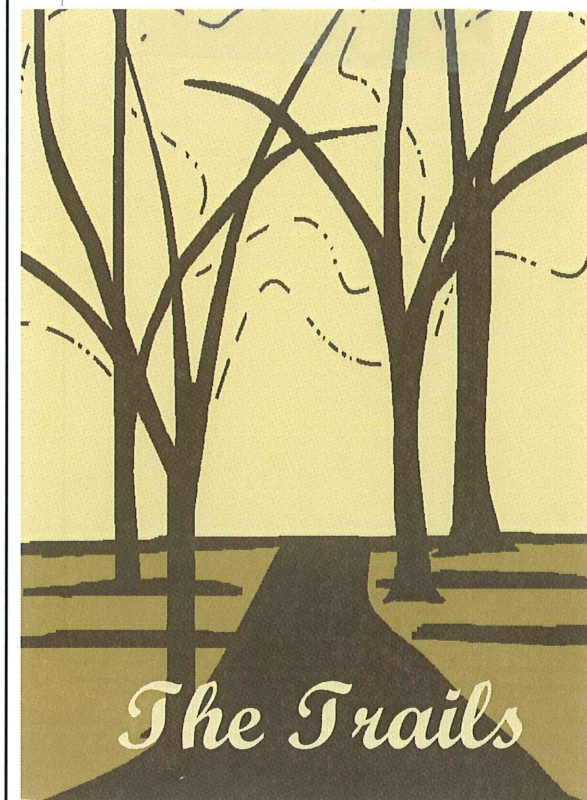
PHONE: (830) 997-4744  
FAX: (830) 997-6967

SCALE: 1"=100'

DATE: 08/20/07

FILE NO: 07060

SHEET: OLS (1 OF 4)



W FOREST GROVE

W FOREST GROVE

MARY LEE LANE  
Co Rd 321